

STRA8 antibody - C-terminal region
Rabbit Polyclonal Antibody
Catalog # AI15045**Specification**

STRA8 antibody - C-terminal region - Product Information

Application	WB
Primary Accession	Q7Z7C7
Other Accession	NM_182489 , NP_872295
Reactivity	Human, Pig, Dog
Predicted	Human, Pig, Dog
Host	Rabbit
Clonality	Polyclonal
Calculated MW	37kDa KDa

STRA8 antibody - C-terminal region - Additional Information**Gene ID** 346673**Other Names**

Stimulated by retinoic acid gene 8 protein homolog, STRA8 {ECO:0000312|EMBL:AAP47163.1}

Format

Liquid. Purified antibody supplied in 1x PBS buffer with 0.09% (w/v) sodium azide and 2% sucrose.

Reconstitution & Storage

Add 50 ul of distilled water. Final anti-STRA8 antibody concentration is 1 mg/ml in PBS buffer with 2% sucrose. For longer periods of storage, store at 20°C. Avoid repeat freeze-thaw cycles.

Precautions

STRA8 antibody - C-terminal region is for research use only and not for use in diagnostic or therapeutic procedures.

STRA8 antibody - C-terminal region - Protein Information**Name** STRA8 ([HGNC:30653](#))**Function**

Meiosis-inducer required for the transition into meiosis for both female and male germ cells. In female germ cells, acts downstream of ZGLP1 as a key effector of the meiotic program: required for premeiotic DNA replication and subsequent events in meiotic prophase. During spermatogenesis, next to its role in meiotic initiation, promotes (but is not required for) spermatogonial differentiation. In complex with MEIOSIN, directly activates the transcription of a subset of critical meiotic genes playing a central role in cell-cycle switching from mitosis to meiosis.

Cellular Location

Cytoplasm {ECO:0000250|UniProtKB:P70278}. Nucleus {ECO:0000250|UniProtKB:P70278}.

Note=Shuttles between nucleus and cytoplasm. Nuclear export is XPO1-dependent
{ECO:0000250|UniProtKB:P70278}

Tissue Location

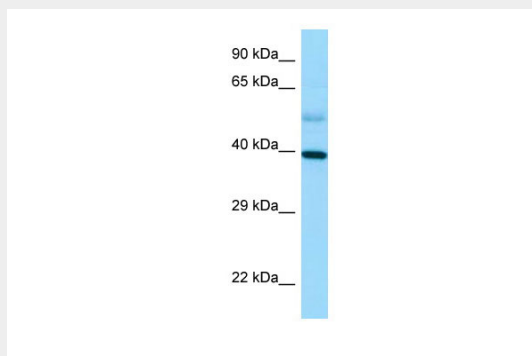
Expressed specifically in testis and fetal ovaries.

STRA8 antibody - C-terminal region - Protocols

Provided below are standard protocols that you may find useful for product applications.

- [Western Blot](#)
- [Blocking Peptides](#)
- [Dot Blot](#)
- [Immunohistochemistry](#)
- [Immunofluorescence](#)
- [Immunoprecipitation](#)
- [Flow Cytometry](#)
- [Cell Culture](#)

STRA8 antibody - C-terminal region - Images



Host: Rabbit
Target Name: STRA8
Antibody Dilution: 1.0µg/ml
Sample Tissue: Human Lung

STRA8 antibody - C-terminal region - References

Miyamoto T.,et al.J. Assist. Reprod. Genet. 19:531-535(2002).
Scherer S.W.,et al.Science 300:767-772(2003).
Mural R.J.,et al.Submitted (JUL-2005) to the EMBL/GenBank/DDBJ databases.